



Meaningful Innovation.

WEEE Number: 80133970

## INSTRUCTION MANUAL

SOLAR LED FLOOD LIGHT



**IP65  
RATING**

### INTRODUCTION

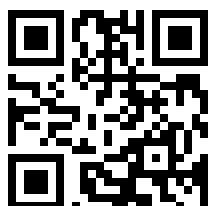
Thank you for selecting and buying V-TAC product. V-TAC will serve you the best. Please read these instructions carefully before starting the installation and keep this manual handy for future reference. If you have any another query, please contact our dealer or local vendor from whom you have purchased the product. They are trained and ready to serve you at the best.



This marking indicates that this product should not be disposed of with other household wastes.



Caution, risk of electric shock.



### MULTI-LANGUAGE MANUAL QR CODE

Please scan the QR code to access the manual in multiple languages.

---

## TECHNICAL DATA

|                       |   |  |
|-----------------------|---|--|
| MODEL                 | VT-411  | VT-432   |
| SKU                   | 10313, 10314  | 10310, 10311,                                    |
| LUMENS                | 1500 LM   | 4800 LM  |
| EQUIVALENT WATT       | 100 W   | 300 W  |
| LEDs                  | SMD 28358x44 pcs  | SMD 2835x90 pcs                                  |
| BATTERY PACK          | Li-ion Battery, 18650<br>3.7V, 3600mAh, 13.32Wh   | LiFePO4 Battery, 32700,<br>6.4v, 6000mAh, 38.4Wh |
| MONO SOLAR PANEL      | 4.5W, 5.5V  | 12.5W,10V  |
| DIGITAL PIR SENSOR    | 120°/6 Meters   | 120°/8 Meters                                    |
| LIGHTING AREA         | 60-80m <sup>2</sup>   | 100-150m <sup>2</sup>                            |
| LAMP SIZE             | 152.7x143.8x32.3mm  | 199.7x189x189.9x49mm                             |
| SOLAR PANEL SIZE      | 202.1x220.9x24mm  | 354x254.2x38.3mm                                 |
| INSTALLED HEIGHT      | 2~4 Meters  | 2~5 Meters                                       |
| INSTALLATION DISTANCE | 8-10 Meters   | 10-14 Meters                                     |
| WARRANTY              |   |  |
| BEAM ANGLE            | 120°x60°, Maximum Lighting design, Bigger Lighting Area                                 |  |
| WORKING MODES         | Auto Sensor Mode<br>Keep Lighting Mode (Can DIY Brightness and lighting time by remote) |  |
| CHARGING TIME         | 4~6 Hours Strong sunshine to fully charge   |  |
| LIGHTING TIME         | Up to 60Hours according to different working mode                                       |  |
| LAMP BRACKET          | 360° Adjustable   |  |
| SOLAR PANEL BRACKET   | 270° Adjustable   |  |
| CONNECTION CABLE      | 5 Meters Long   |  |
| HOUSING MATERIAL      | ABS+PC+ALUMINIUM, Anti-UV, V0 Fireproof   |  |
| PACKING               | 1 Lamp, 1 Solar Panel, 1 Remote Control +2 AAA Batteries, 4 Set Screws, 1 user Manual   |  |

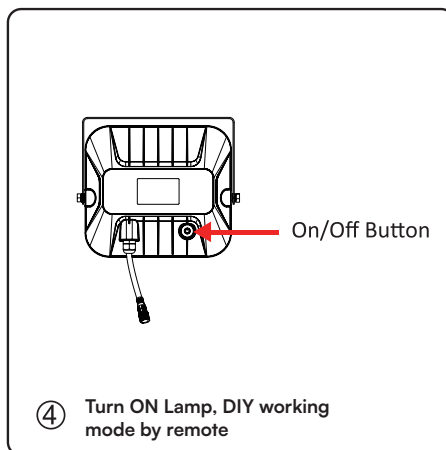
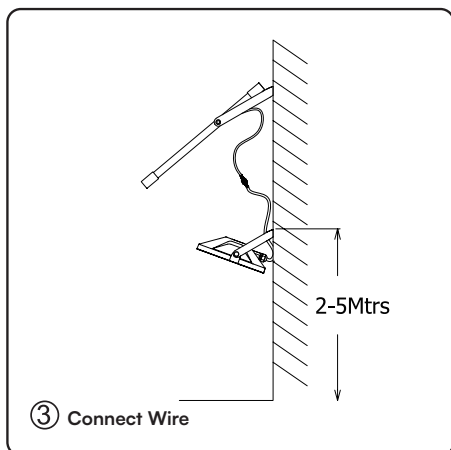
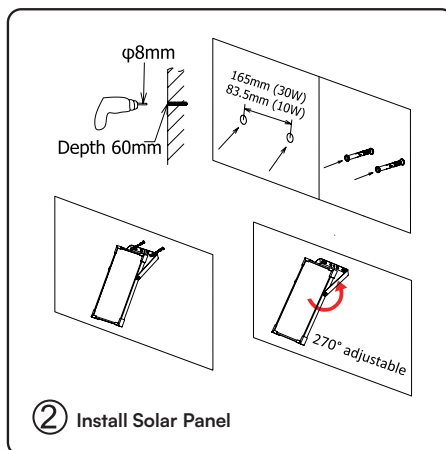
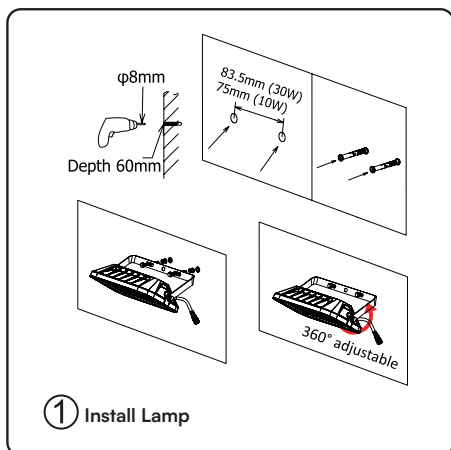
## WARNING

1. This is a solar powered lamp, please install the solar panel in a location where can get enough sunshine.
2. Please note the lighting time depends on sunshine duration & working mode.
3. The On/Off button on the lamp is power-off switch, helpful to save power consumption. Also the lamp can still get solar charge at day time when the lamp is turned off.
4. Built-in intelligent IC is with over-charge and over-discharge protection, safe & durable.
5. Non-professionals please do not disassemble the lamp.
6. Please do not dispose the battery with household garbage to avoid explosion.

## INSTALLATION

Prepare the lamp, accessories and tools well, confirm the installation location and wire length.

1. Drill 2 holes of Ø8mm with a depth of 60mm on the wall, fix the lamp on the wall with expansion plugs and screws.
  2. Drill 2 holes of Ø8mm with a depth of 60mm on the wall, fix the solar panel on the wall with expansion plugs and screws.
  3. Connect the wire of the solar panel to the lamp and screw it tightly.
  4. Press the button on the lamp to activate the remote control, then use remote control to set desired working mode.
-

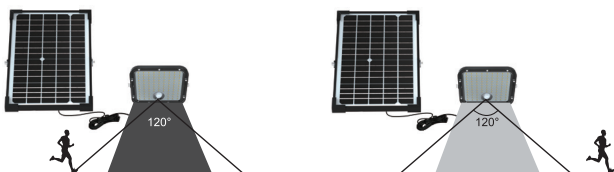


## TWO OPTIONAL WORKING MODES



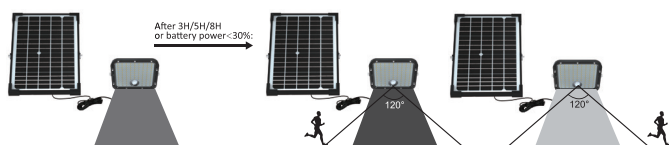
Please press the button on the lamp first, the lamp will automatically turn on and enter Auto Sensor Mode, and the remote control is activated at the same time. Then, please use remote control to set desired working mode.

### MODE A: AUTO SENSOR MODE



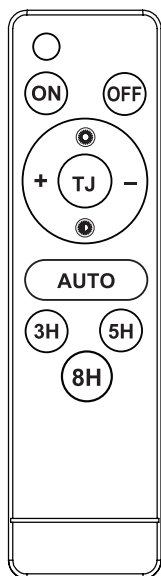
Lamp automatically lights up at night and turns to full brightness when motion is detected in the range  $\leq 8\text{Mtrs}$ , then turns to lower brightness in 60 seconds of no motion.

### MODE B: KEEP LIGHTING MODE



Lamp automatically lights up at night and keep selected brightness for 3H/5H/8H, after which or when the battery power is less than 30%, lamp turns to Auto Sensor Mode.

## OPERATIONS OF DIY WORK MODE BY REMOTE CONTROL



|          |  |   |
|----------|--|---|
| ○ TJ     | Useless Buttons  |   |
| ON       | *Press ON, Lamp turns on<br>*On/Off Switches on the remote control are with memory function.   |   |
| OFF      | Press OFF, Lamp flicks 3 times then turns off.   |   |
| AUTO     | *Press Auto, The Lamp enters AUTO sensor mode directly.<br>*Lamp Brightness and Lighting time are not selectable under Auto Sensor mode. |   |
| 3H 5H 8H | Keep Lighting Time   | * These 7 keys(in gray background) are only used to adjust lighting time and brightness of Keep Lighting Mode. * Please press the 3H/5H/8H firstly, the lamp will enter Keep Lighting Mode automatically, then press to /●/●/●/●/●/●/●/ set desired brightness.<br><br><b>For example:</b> Press 3H+●+●, lamp works as below: Lamp lights up at night and keep <b>45%</b> brightness for <b>5Hrs</b> . After 5Hrs or when battery power is less than 30%, lamp turns to Auto Sensor Mode. |
| ●        | 60% Brightness   |   |
| ●        | 30% Brightness   |   |
| +        | +15% Brightness by each press (Max 60% Brightness)   |   |
| -        | -15% Brightness by each press (Min 15% Brightness)   |   |

## OPERATION OF INDICATOR LIGHT

This lamp has a red indicator light, which shows the charging state of the lamp.

| Working Status of Solar Lamp                 | Indicator Light Status During the Day | Indicator Light Status At Night                           |
|--|---------------------------------------|---|
| Battery power is more than 80%.              | Stay on                               | Off   |
| The battery charges and discharges normally. | Flash every 3 seconds                 | Off   |
| Battery power is less than 30%.              | Flash every 3 seconds                 | Flash 3 times, then turn off for 3 seconds. Keep looping. |

## WIDE APPLICATIONS

Widely used for construction site, gate, courtyard, corner, garden, industrial area, warehouse, garage, parking lot, roof, factory, pathway, farm, pavilion, countryside, pergola, bus station etc.